



## **Thomas SR71 HTL**

### ***Precision. Power. Performance.***

You want a trusted name when it comes to providing engineered power transmission products that improve productivity and efficiency. Rexnord provides superior products for your industrial applications world wide. We work closely with you to reduce maintenance costs, eliminate redundant inventories and prevent equipment downtime.

### ***Applications include:***

- ▶ pumps
- ▶ fans

### ***Rexnord Thomas SR71 with taper bush hubs***

Spacer style flexible metallic disc coupling designed specifically for pump applications. The simple three piece design, piloted center member and taper bush hubs provide fast installation, significantly reducing installation and service time. The four and six bolt style offers high misalignment and axial capacity. Reversible hubs allow for internal or external taper bush mounting.



**Ex II 2GD T5**

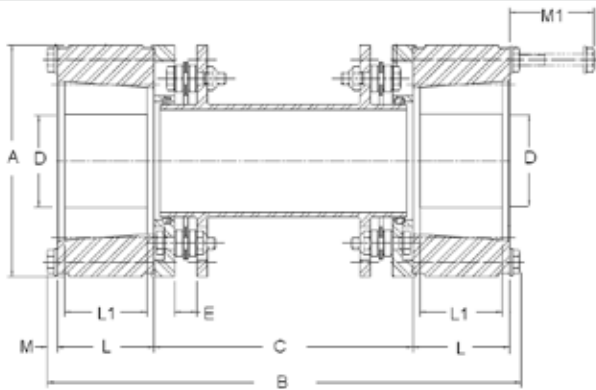
# Thomas SR71 HTL

## Features

- ▶ Unitized and piloted center member
- ▶ Jacking bolt feature
- ▶ Reversible hubs

## Benefits

- ▶ Ease of installation
- ▶ Repeatable balance
- ▶ Ease of installation
- ▶ Ease of installation
- ▶ Reduced inventory



Torque Demands Driven Machine	Typical Application for Electric Motor or Turbine Driven Equipment	Typical Service Factor
	Constant torque such as centrifugal pumps, blowers and compressors	1.0
	Continuous duty with some torque variations including plastic extruders and forced draft fans	1.5
	Light shock loads from metal extruders, cooling towers and log haulers	2.0
	Moderate shock loading as expected from a car dumper, stone crusher, vibrating screen	2.5
	Heavy shock load with some negative torques from reciprocating pumps, compressors, reversing turnout tables	3.0
	Frequent torque reversals such as reciprocating compressors with frequent torque reversals which do not necessarily include reverse rotations	Consult Rexnord Engineering

### Dimensional data

Size	Tn Nm	n-max min-1	Taper Bush	Dmin mm	Dmax mm	A mm	E mm	L mm	L1 mm	M mm	M1 mm	J kgm2	J/C kgm2/m	m kg	m/C kg/m	End float +-mm
150	105	9000	1610	12	42	91	12,3	41	25,4	5,6	20	0,0032	0,0004	3,1	1,7	1,3
175	184	8300	2012	14	50	106	12,4	46	31,8	5,6	15	0,006	0,001	4,2	2,5	1,8
225	345	7700	2517	19	65	126	12,4	52	44,5	5,6	15,5	0,012	0,029	6,2	3,4	1,9
300	820	6800	3020	35	75	152	15,2	70	50,8	5,6	16,5	0,036	0,076	11,6	4,6	2,2
350	1513	6200	3525	35	100	172	17,3	76	63,5	7,5	24,4	0,076	0,0136	19,4	7,5	2,3

### Dimension B

Size	Bmin mm	Cmin mm	DBSE „C“ (mm)				DBSE „C“ (inch)				
			100	140	180	250	3 1/2	4 3/8	5	5 1/2	7
			ISO				ANSI				
150	177	84	193	233	273		182	204	220		
175	187	84	203	243	283	353	192	214	230		
225	199	84		255	295	365	204	226	242	255	293
300	253	102		291	331	401			278	291	329
350	291	124		307	347	417			294	307	345

### Taper bush range

Size	12	14	15	16	18	19	20	22	24	25	28	30	32	35	38	40	42	45	48	50	55	60	65	70	75	80	85	90	95	100	
1610																															
2012																															
2517																															
3020																															
3525																															

■ Reduced key way



**REXNORD NV, Belgium**  
 Dellingsstraat 55  
**2800 Mechelen**  
 Phone: +32 / 15 44 38 11  
 Fax: +32 / 15 44 38 60  
 E-mail: CSB@rexnord.com  
[www.rexnord.eu](http://www.rexnord.eu)

## Contact