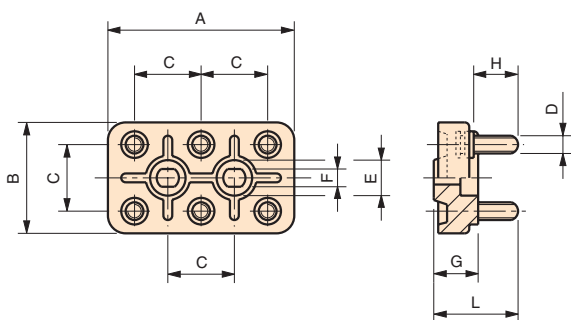


BAM

Morsettiere Terminal block

Bornier



cod.	modello	A	B	C	G	L	D	H	F	E
8100132	BAM/3/T	40	25	15	12	23	M4	12	4,5	9
8100909	BAM/4/T	50	32	18	12	23	M4	12	4,5	9

NOTE: Si forniscono, per quantità adeguate, anche a 3/4/5 morsetti.
Morsetti in ottone a base tonda.
Brass terminals.
Insert en laiton à base ronde.

Materiale: Approvato da U.L. Americana.

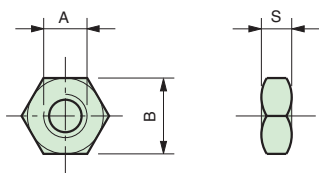
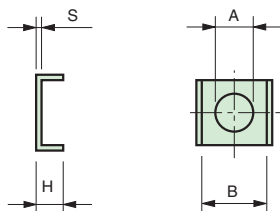
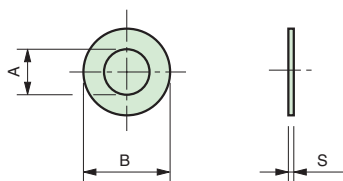
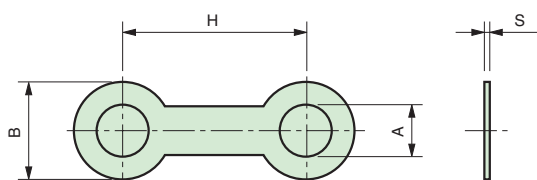
Aminoplastico speciale grigio. Alto potere dielettrico.
Resistente alle correnti striscianti. Classe di isolamento E.
Grey melamine plastic, electrical insulation class E.
Aminoplastique gris spécial. Haut pouvoir diélectrique.
Classe d'isolation E.

A richiesta vengono prodotte anche in duroplasto nero, caricato con fibre di vetro. Classe di isolamento H.
Upon request the terminal blocks are produced in black fiber reinforced phenolic plastic. Electrical insulation class H.
Nous pouvons fournir en duroplast noir renforcé de fibre de verre. Classe d'isolation H.

Accessori di collegamento

Accessoires

Accessories for terminal block



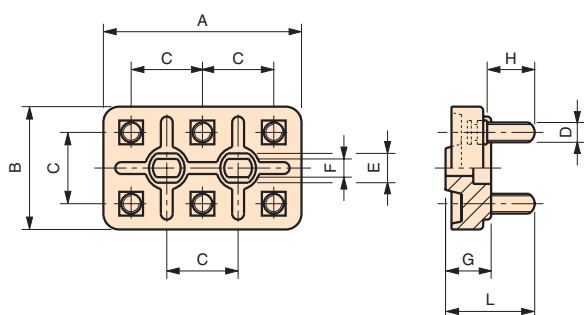
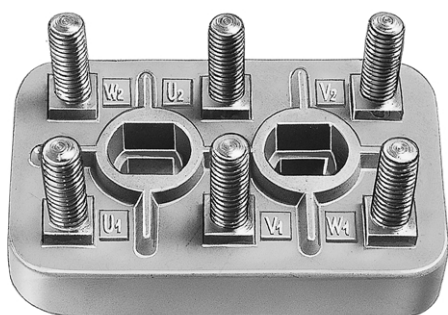
cod.	modello	A	B	S	H		
	BAM/3/T						
6214025	Rondelle	4,2	8	0,5	—	washers	rondelles
8800039	Ponti	4,5	7	0,5	15	jumpers	ponts
6214020	Dadi	DIN 439	M4	7	2,3	nuts	écrous
	BAM/4/T						
6214025	Rondelle	4,2	8	0,5	—	washers	rondelles
6214015	Ponti	4,5	9	0,5	18	jumpers	ponts
6214020	Dadi	DIN 439	M4	7	2,3	nuts	écrous

Materiale: Ottone.
Brass.
Laiton.

BAM

Morsettiere Terminal block

Bornier



Serie M.E.C.

cod.	modello	A	B	C	G	L	D	H	F	E
6213005	BAM/3	40	25	15	12	20	M3	9	4,5	9
6214005	BAM/4	50	32	18	12	22,5	M4	12	4,5	9
6216005	BAM/5	56	36	20	13	29	M5	15	5,5	10
6217005	BAM/6	70	45	25	16,5	32	M6	17	6,5	11
6218005	BAM/8	96	61	35	20	40	M8	22	9	13,5

NOTE: Morsetti in ottone a base quadrata.
Brass-terminals.
Insert en laiton à base carrée.

Materiale: Approvato da U.L. Americana.

Aminoplastico speciale grigio. Alto potere dielettrico.
Resistente alle correnti striscianti. Classe di isolamento E.
Grey melamine plastic, electrical insulation class E.
Aminoplastique gris spécial. Haut pouvoir diélectrique.
Classe d'isolation E.

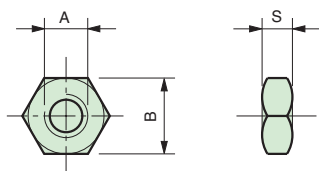
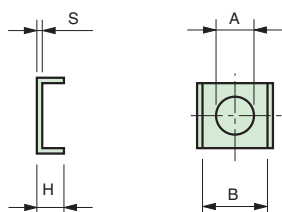
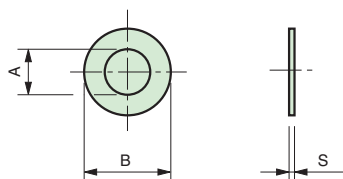
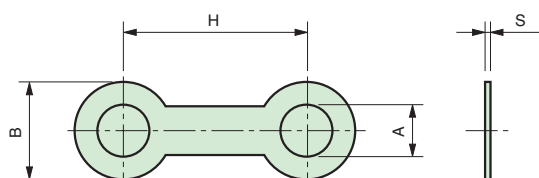
A richiesta vengono prodotte anche in duroplasto nero, caricato con fibre di vetro. Classe di isolamento H.

Upon request the terminal blocks are produced in black fiber reinforced phenolic plastic. Electrical insulation class H.

Nous pouvons fournir en duroplast noir renforcé de fibre de verre. Classe d'isolation H.

Accessori di collegamento Accessories for terminal block

Accessoires



Per morsettiere serie M.E.C. (mod. BAM)

cod.	modello	A	B	S	H		
BAM/3							
6213030	Serrafili	3,2	5	0,5	3	terminals	serre-fils
6213025	Rondelle	3,2	7	0,5	-	washers	rondelles
6213015	Ponti	3,4	7	0,5	15	jumpers	ponts
6213020	Dadi	DIN 439	M3	5,5	1,8	nuts	écrous
BAM/4							
6214030	Serrafili	4,2	6	0,5	3	terminals	serre-fils
6214025	Rondelle	4,2	8	0,5	-	washers	rondelles
6214015	Ponti	4,5	9	0,5	18	jumpers	ponts
6214020	Dadi	DIN 439	M4	7	2,3	nuts	écrous
BAM/5							
6216030	Serrafili	5,2	7,2	0,5	3	terminals	serre-fils
6216025	Rondelle	5,5	11	0,5	-	washers	rondelles
6216015	Ponti	5,5	10	0,5	20	jumpers	ponts
6216020	Dadi	DIN 439	M5	8	2,7	nuts	écrous
BAM/6							
6217030	Serrafili	6,2	8,5	0,5	3,5	terminals	serre-fils
6217025	Rondelle	6,2	13	0,5	-	washers	rondelles
6217015	Ponti	6,5	12	1	25	jumpers	ponts
6217020	Dadi	DIN 439	M6	10	3,2	nuts	écrous
BAM/8							
6218025	Rondelle	8,2	16	0,8	-	washers	rondelles
6218015	Ponti	8,2	15	1,5	5	jumpers	ponts
6218020	Dadi	DIN 439	M8	13	4	nuts	écrous

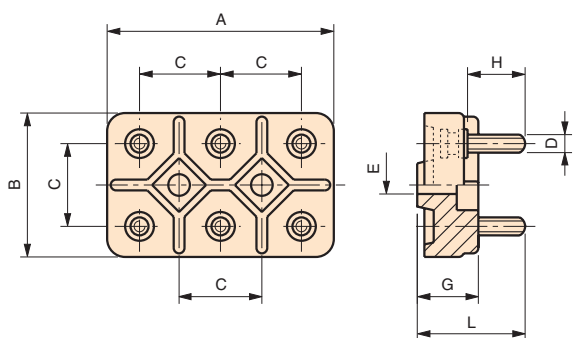
NOTE: Ogni morsettiere comprende 6 serrafilo - 6 rondelle - 3 ponti - 12 dadi.
Each terminal includes 6 washers, 12 nuts, 3 jumpers, 6 terminals.
Bornier livré complet avec: 6 rondelles - 6 serre-fils - 3 ponts - 12 écrous.

Materiale: Ottone.
Brass.
Laiton.

BM

Morsettiere Terminal block

Bornier



Serie M.E.C. - Tipo unificato, tabella DIN 46294.
DIN norm 46294.
Serie M.E.C. - Type unifié, suivant DIN 46294.

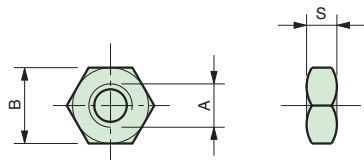
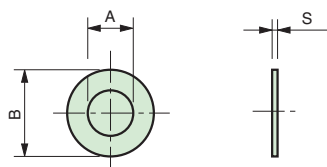
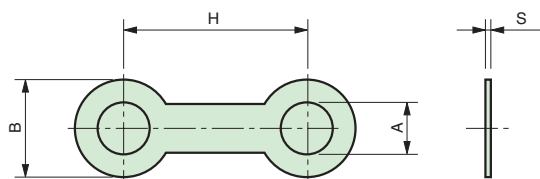
cod.	modello	A	B	C	G	L	D	H	E
6210005	BM/4	54	34	20	15	25	M4	12	6,3
6211005	BM/5	64	40	23	16	30	M5	15	7
6212005	BM/6	78	48	28	20	36	M6	20	7

NOTE: Morsetti in ottone a base tonda.
Brass terminals.
Insert en laiton à base ronde.

Materiale: Resina fenolica con carica minerale, colore fibra. Alto potere dielettrico.
Classe di isolamento E.
Brown mineral filled phenolic plastic. Insulation class E.
Résine phénolique renforcée. Haut pouvoir diélectrique.
Class d'isolation E.

Accessori di collegamento Accessories for terminal block

Accessoires



Per morsettiere serie M.E.C. (mod. BAM)

cod.	modello	A	B	S	H		
BAM/4							
6214025	Rondelle	4,2	8	0,5	–	washers	rondelles
6214015	Ponti	4,8	9	0,5	20	jumpers	ponts
6214020	Dadi	DIN 439	M4	7	2,3	nuts	écrous
BAM/5							
6216025	Rondelle	5,5	11	0,5	–	washers	rondelles
6211015	Ponti	5,8	11	0,8	23	jumpers	ponts
6216020	Dadi	DIN 439	M5	8	2,7	nuts	écrous
BAM/6							
6217025	Rondelle	6,2	13	0,5	–	washers	rondelles
6212015	Ponti	7	13	1	28	jumpers	ponts
6217020	Dadi	DIN 439	M6	10	3,2	nuts	écrous

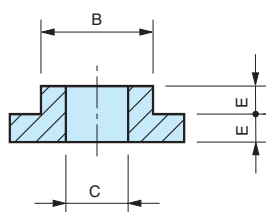
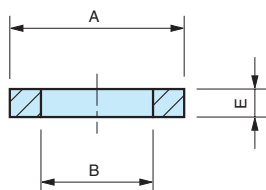
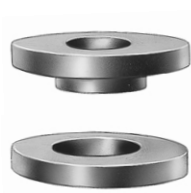
NOTE: Ogni morsettiere comprende - 6 rondelle - 3 ponti - 12 dadi.
Each terminal includes 6 washers, 12 nuts, 3 jumpers.
Bornier livré complet avec: 6 rondelles - 3 ponts - 12 écrous.

Materiale: Ottone.
Brass.
Laiton.

RO

Coppia rondelle isolanti Insulating washers

Couple de rondelles isolantes



cod.	modello	A	B	C	E
6318005	RO/1	28	18	∅ 8	4,5
6318010	RO/1	28	18	∅10	4,5
6318015	RO/2	35	18	∅12,5	4,5

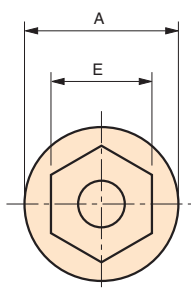
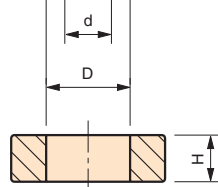
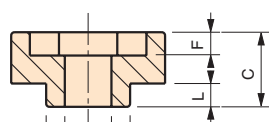
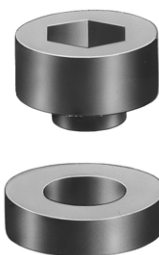
NOTE: Disponibili a magazzino nei colori nero e rosso.

Materiale: Tecnopolimero.
Black or red thermoplastic.
Technopolymère.

RO

Coppia rondelle isolanti Insulating washers

Couple de rondelles isolantes



cod.	modello	A	d	E	D	H	F	L	C
6219005	RO/3	20	6,5	10,5	10,5	5	3	4	12,5
6219010	RO/4	32	8	14,5	18	11	3	5	16
6219015	RO/4	32	10	17,5	18	11	3	5	16
6219020	RO/4	32	12	19,5	18	11	3	5	16

NOTE: Disponibili a magazzino nei colori nero e rosso.

Materiale: Duroplasto.
Black or red phenolic plastic.
Duroplast.

M

Morsetto serrafilo Terminal

Borne serre-fil

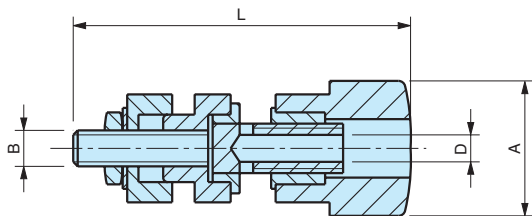


Corpo in ottone nichelato.
Nickel plated brass stud.
Corps en laiton nickelé.

cod.	modello	A	L	D	B	colore	colour	couleur
6319005	M/43	15	43	Ø4	M4	Nero	Black	Noir
6319010	M/43	15	43	Ø4	M4	Rosso	Red	Rouge

NOTE: Disponibili a magazzino nei colori nero e rosso.

Materiale: Tecnopolimero.
Black or red thermoplastic.
Technopolymère.



M

Morsetto serrafilo Terminal

Borne serre-fil

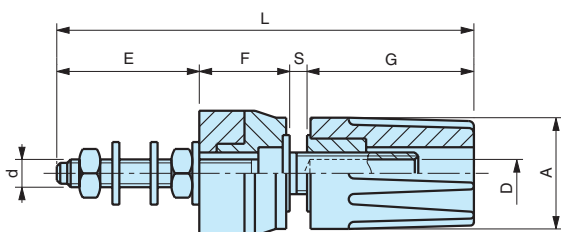


Corpo in ottone nichelato.
Nickel plated brass stud.
Corps en laiton nickelé.

cod.	modello	A	D	d	E	F	S	G	L	colore	colour	couleur
6319015	M/59	16	Ø4	M4	19	13	2,5	24,5	59	Nero	Black	Noir
6319020	M/59	16	Ø4	M4	19	13	2,5	24,5	59	Rosso	Red	Rouge

NOTE: Disponibili a magazzino nei colori nero e rosso.

Materiale: Tecnopolimero.
Black or red thermoplastic.
Technopolymère.



VMS

Morsetto serrafilo Terminal

Borne serre-fil

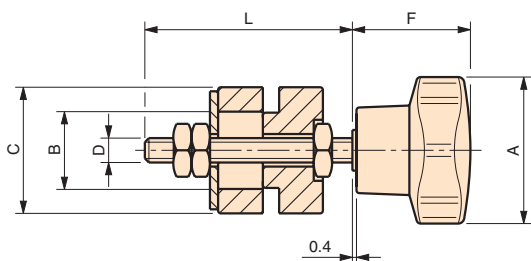


Corpo in ferro zincato.
Zinc plated steel stud.
Corps en acier zingué.

cod.	modello	A	B	C	D	F	L	colore	colour	couleur
6220005	VMS/20	20	11	20	M 6	16	47	Nero	Black	Noir
6220010	VMS/20	20	11	20	M 6	16	47	Rosso	Red	Rouge
6220015	VMS/40	40	18	32	M 8	28	50	Nero	Black	Noir
6220020	VMS/40	40	18	32	M 8	28	50	Rosso	Red	Rouge
6220025	VMS/40	40	18	32	M 10	28	50	Nero	Black	Noir
6220030	VMS/40	40	18	32	M 10	28	50	Rosso	Red	Rouge
6220035	VMS/50	50	18	32	M 12	32	50	Nero	Black	Noir
6220040	VMS/50	50	18	32	M 12	32	50	Rosso	Red	Rouge

NOTE: Sono formati dal volantino a sei lobi con bussola sporgente e dalle coppie rondelle in duroplasto.
Sono disponibili a magazzino in colore nero.

Materiale: Duroplasto.
Black or red phenolic plastic.
Duroplast.



PR

Passacavo Cable lock

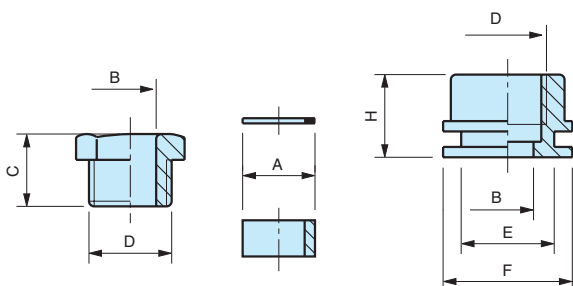
Passe cloison



cod.	modello	B	D	C	A	H	E	F
6317005	PR/1	12	3/8" gas	14	15	16	20	27

NOTE: Si forniscono, per quantità adeguate, in colori diversi.

Materiale: Tecnopolimero nero.
Black thermoplastic.
Technopolymère noir.



Salvaspigo per imballaggio Corner-protector for packing

Protection d'angle pour emballage



cod.	modello	A	B	C
6326005	Salvaspigo	45	52	20

Materiale: Tecnopolimero nero.
Black thermoplastic.
Technopolymère noir.

